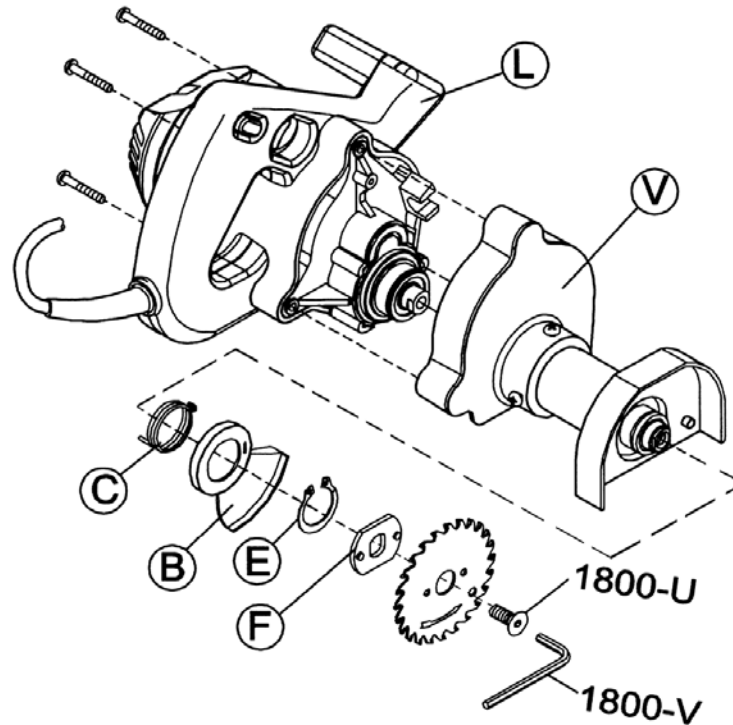


No. 785 Toe-Kick Saw



NO. 785 TOE-KICK SAW

Order No.	Description
1785-B*	Blade Guard
1785-C*	Return Spring
1785-E*	Blade Guard Retainer Ring
1785-F*	Blade Driver
1785-L	Power Unit - Discontinued
1785-V	Head w/ Spindle & Bearings
1800-U*	Socket Set Screw
1800-V*	Allen® Wrench

(*) Same for all previous models.

NOTES TO NO. 785: Parts 1785-L Power Unit and 1785-V Head w/ Spindle & Bearings available for Skill saw motor activated saws only (black plastic motor housing). Saws made with Black & Decker saw motors may be returned to factory for evaluation (green plastic motor housing — some parts available). No parts available for drill activated saws except those common to all models (marked with* above).